



## 2 Watt Dual Output Regulated Isolation 1000vdc Dc-Dc Converter



### FEATURES:

- 2:1 Wide Input Voltages Range
- High Efficiency up to 85%
- Regulated Output Types
- Low Ripple And Noise
- Internal SMD Construction
- Operating Temperature: -40°C TO +85°C
- Industry Standard Pinout
- Continuous Short Circuit Protection With Current Foldback.



Specifications typical at TA=25°C, nominal input voltage and rated output current unless otherwise specified

Part Number	Input Voltage Range	Output Voltage Range	Output Current	Efficiency
	Vdc	Vdc	mA	%TYP
27D-05D05RNL	5-9	+5	+200	65
27D-05D09RNL	5-9	+9	+111	70
27D-05D12RNL	5-9	+12	+84	70
27D-05D15RNL	5-9	+15	+67	70
27D-05D24RNL	5-9	+24	+42	80
27D-12D05RNL	9-18	+5	+200	70
27D-12D09RNL	9-18	+9	+111	80
27D-12D12RNL	9-18	+12	+84	80
27D-12D15RNL	9-18	+15	+67	80
27D-12D24RNL	9-18	+24	+42	80
27D-24D05RNL	18-36	+5	+200	75
27D-24D09RNL	18-36	+9	+111	80
27D-24D12RNL	18-36	+12	+84	80
27D-24D15RNL	18-36	+15	+67	80
27D-24D24RNL	18-36	+24	+42	80
27D-48D05RNL	36-72	+5	+200	70
27D-48D09RNL	36-72	+9	+111	80
27D-48D12RNL	36-72	+12	+84	80
27D-48D15RNL	36-72	+15	+67	80
27D-48D24RNL	36-72	+24	+42	80

### Input Specifications

Parameters	Conditions	Min	Typ	Max	Units
Voltage Tolerance	Vo, Io Nom			2:1	
Filter	Capacitor				

### Output Specifications

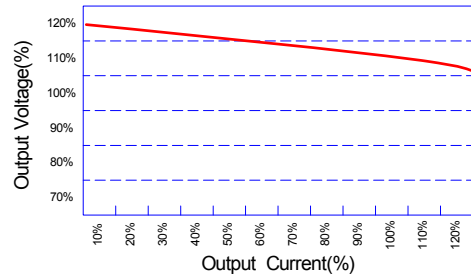
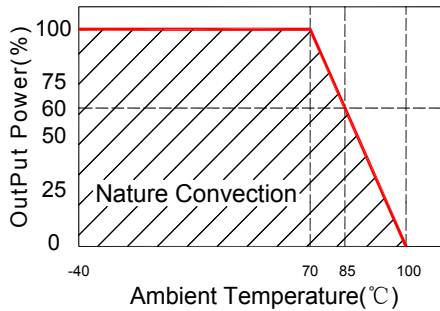
Parameters	Conditions	Min	Typ	Max	Units
Voltage Tolerance	100% full load			±3	%
Short Circuit Protection	Continuous				
Line Regulation	REGULATED			±0.5	%
Load Regulation	REGULATED			±0.8	%
Ripple & Noise	Output: 5-9V TYPES BW=DC To 20MHz			100	mVp-p
Ripple & Noise	Output: 12-24V TYPES BW=DC To 20MHz			1% of Vout	mVp-p
Transient response setting time	50% load step change		350		us

### General Specifications

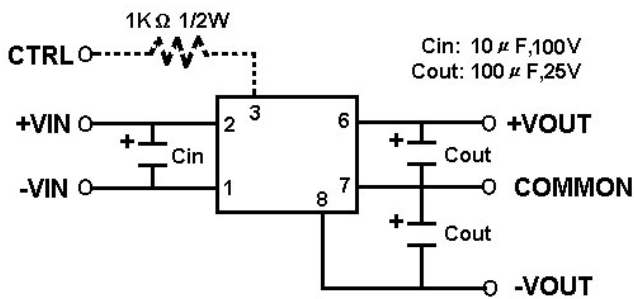
Parameters	Conditions	Min	Typ	Max	Units
Isolation Resistance	500Vdc	1000			MΩ
Switching Frequency	Full load, nominal input		100		KHz
Operating Temperature		-40		85	°C
Humidity	Non Condensing			95	%
Cooling	Free air Convection				
Case material	DAP				
MTBF	MIL-HDBK-217F@25°C	3500000			Hours
Weight			4.5		g
Dimensions			21.8X9.2X11.1		mm

**2 Watt Dual Output Regulated Isolation 1000vdc Dc-Dc Converter**

**Temperature Derating Graph      Tolerance Envelope Graph**



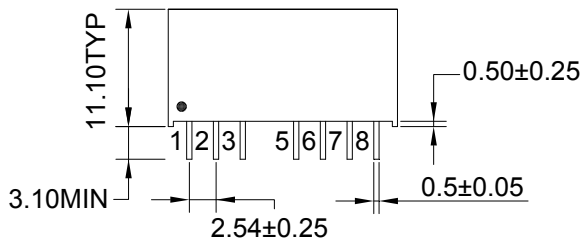
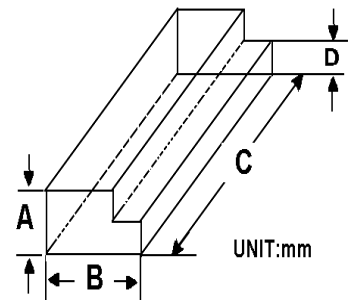
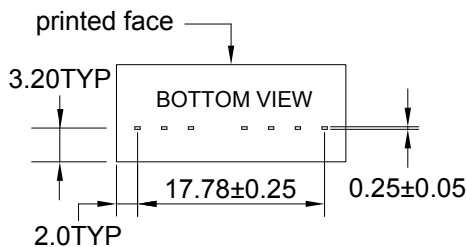
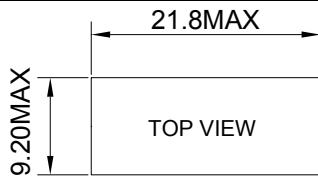
**Recommended Test Circuit      Part Number**



**27D - 05 D 05 R NL**  
**A B C D E F**

- A:Series
- B:Input Voltage
- C:Dual(D)
- D:Output Voltage
- E:Regulated(R)
- F:RoHS Version

**Markings and Dimensions      Packaging**



UNIT : mm TYP tolerances are ±0.5

Size(mm)			
A	B	C	D
12.0	28.55	550	6.00

**PIN Connection**

PIN	1	2	3	5	6	7	8
Dual	-Vin	+Vin	Ctrl-Control input can (can be left open)	NE-No external connection allowed	+Vout	COM	-Vout